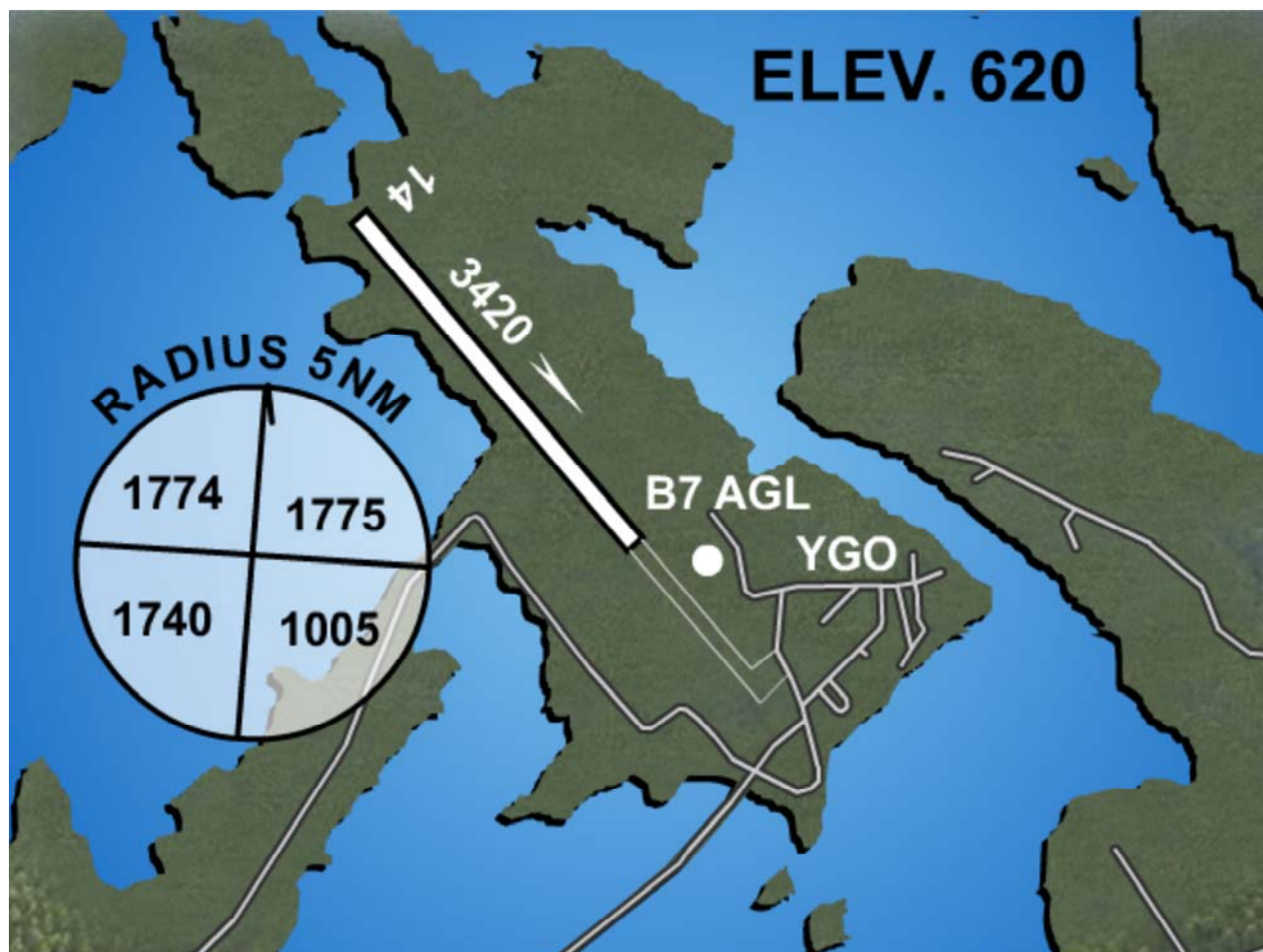


God's Lake Narrows Airport (CYGO) Information



REF	N54 33 37 W94 29 37 3°E UTC-6(5) Elev 620' A5017 E-17 LO3
OPR	Man Govt 204-677-6722 Cert
PF	A-1 C-2,4,5 TML bidg opr 14-23Z(DT 13-22Z) Mon-Fri clsd Sat, Sun & hols
FLT PLN	NOTAM FILE CYNTH
FSS	Thompson 800-422-0611
RWY DATA	Rwy(144°)/32(324°) 3420x100 gravel/clay
RCR	APM 204-335-2024 O/T 204-335-2137
LIGHTING	14-(TE LO,32-(TE LO) ARCAL-122.8 TYPE J
COMM	Man Govt 204-677-6722 Cert
A/G	4895
ATF	unicom ltd hrs O/T tfc 122.8 5NM 3600 ASL

Airport Coordinates	Latitude (N): 54 33 32 Longitude (W): 94 29 29
Airport Identification	CYGO
Airport Elevation	617
Magnetic Variation	1E
Runway Number	14-32
Runway Length	3420
Runway Width	100
Surface	crushed rock
Night Flying	Yes
Maintained Year Round	Yes
Radio Communications	Unicom 122.8 Mhz limited hours (other times call: traffic) within 5 nm and 3700 feet ASL
Navaid:	NDB "YGO" 343 khz on the airport, unmonitored

The God's Lake Narrows Airport (CYGO) is maintained year-round by the government of Manitoba (Tel: 204-677-6722). It is a certified airport, listed in Canada Flight Supplement. It appears on VFR navigation charts. There are no landing fees on private aircraft.

The terminal building open 1300-1800Z and 1900-2115Z Monday to Friday. It is closed weekends and holidays. The airport has a telephone and washrooms. There is no fuel at the airport. It is not a customs port of entry.